



GP DC Miniature Centrifugal Water Pump

Quality OEM Electric Centrifugal Water Pump DTS2501

>> Product Outward



>> Specifications

Pump Type	Centrifugal Pump / DC brushless motor (20000 hours)
Speed Control	Voltage and PWM adjustable optional
Signal Feedback	Motor speed and RD status
IP Level	Epoxy potting, IP68 waterproof rating
Power Supply	Suitable for solar panel, batteries,adapter or other power module.
Medium	Water, coffee and other non-viscous liquid
Protection	Rotor lock protection/Reversepolarity protection (Can be customized as required)
Remark	Can't dry-running, not self-priming

>> Product Futures

Efficient Design

Micro brushless centrifugal pumps have a simple, lightweight structure that operates with high efficiency, providing continuous and stable flow and head for large volumes of low-viscosity liquids.

High Stability

The static sealing design prevents leaks by isolating the liquid from the motor, while epoxy encapsulation ensures 100% waterproof capability. Also features overload protection for safe operation.

Low Noise

With low rotor imbalance, these pumps operate quietly 5-10 dB(A) lower than comparable brushed DC pumps, while eliminating commutation vibrations for smoother operation.

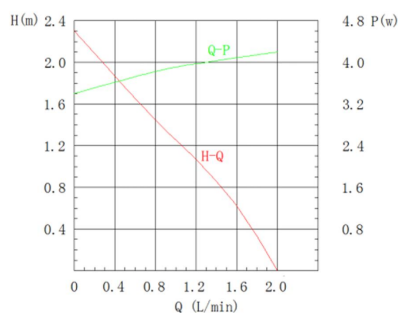
Wide Application

Micro brushless centrifugal water pumps are suitable for various occasions, including aquariums, medical equipment, humidifiers, etc., to meet the liquid transfer needs of different fields.

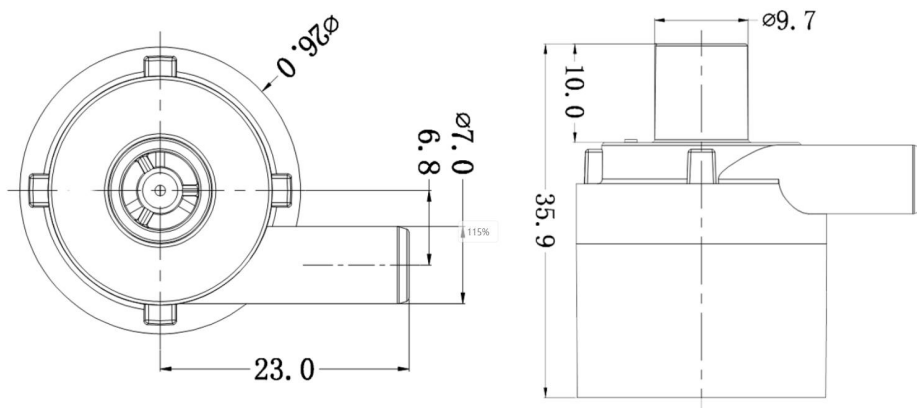
>> Technical Parameters

Model	Voltage	Amps	Max Flow Rate	Max Lift Head	Power	Work Voltage	Flow Range	Max Temperature
DTS2501-A	6V	0.15A	1.3LPM	1.0M	0.90W	3-24V DC	0.9-2.0LPM	70℃
DTS2501-B	12V	0.34A	2.0LPM	2.0M	3.80W			
DTS2501-C	18V	0.22A	2.0LPM	2.0M	3.96W			
DTS2501-D	24V	0.18A	2.0LPM	2.3M	4.32W			

>> Flow-lift Curve



>> Dimensions





GP DC Miniature Centrifugal Water Pump

Quality OEM Electric Centrifugal Water Pump DTS2501F (Food-Grade)

>> Product Outward



>> Specifications

Pump Type	Centrifugal Pump / DC brushless motor (20000 hours)
Speed Control	Voltage and PWM adjustable optional
Signal Feedback	Motor speed and RD status
IP Level	Epoxy potting, IP68 waterproof rating
Power Supply	Suitable for solar panel, batteries,adapter or other power module.
Medium	Water, coffee and other non-viscous liquid
Protection	Rotor lock protection/Reversepolarity protection (Can be customized as required)
Remark	Can't dry-running, not self-priming

>> Product Futures

Efficient Design

Micro brushless centrifugal pumps have a simple, lightweight structure that operates with high efficiency, providing continuous and stable flow and head for large volumes of low-viscosity liquids.

High Stability

The static sealing design prevents leaks by isolating the liquid from the motor, while epoxy encapsulation ensures 100% waterproof capability. Also features overload protection for safe operation.

Low Noise

With low rotor imbalance, these pumps operate quietly 5-10 dB(A) lower than comparable brushed DC pumps, while eliminating commutation vibrations for smoother operation.

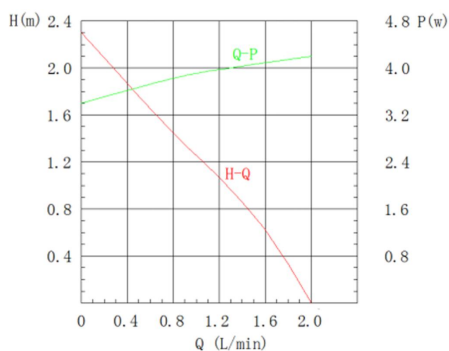
Wide Application

Micro brushless centrifugal water pumps are suitable for various occasions, including aquariums, medical equipment, humidifiers, etc., to meet the liquid transfer needs of different fields.

>> Technical Parameters

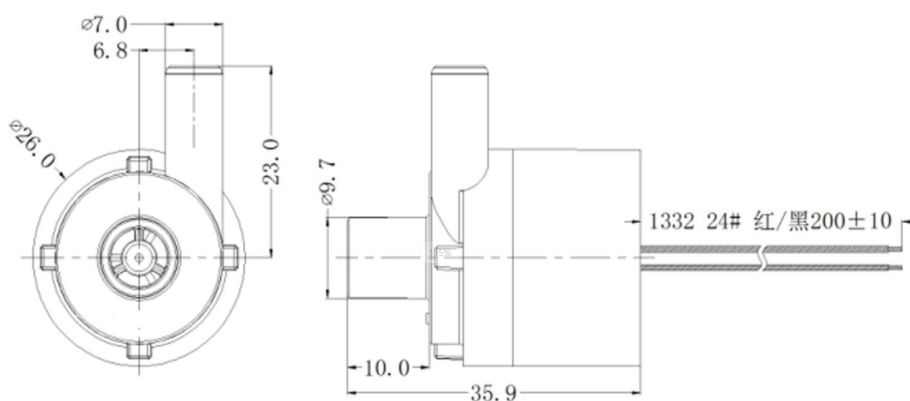
Model	Voltage	Amps	Max Flow Rate	Max Lift Head	Power	Work Voltage	Flow Range	Max Temperature
DTS2501F -A	6V	0.15A	1.3LPM	1.0M	0.90W	3-24V DC	0.9-2.0LPM	100℃
DTS2501F -B	12V	0.34A	2.0LPM	2.0M	3.80W			
DTS2501F -C	18V	0.22A	2.0LPM	2.0M	3.96W			
DTS2501F -D	24V	0.18A	2.0LPM	2.3M	4.32W			

>> Flow-lift Curve



24V

>> Dimensions





GP DC Miniature Centrifugal Water Pump

Quality OEM Electric Centrifugal Water Pump DTS2502

>> Product Outward



>> Specifications

Pump Type	Centrifugal Pump / DC brushless motor (20000 hours)
Speed Control	Voltage and PWM adjustable optional
Signal Feedback	Motor speed and RD status
IP Level	Epoxy potting, IP68 waterproof rating
Power Supply	Suitable for solar panel, batteries,adapter or other power module.
Medium	Water, coffee and other non-viscous liquid
Protection	Rotor lock protection/Reversepolarity protection (Can be customized as required)
Remark	Can't dry-running, not self-priming

>> Product Futures

Efficient Design

Micro brushless centrifugal pumps have a simple, lightweight structure that operates with high efficiency, providing continuous and stable flow and head for large volumes of low-viscosity liquids.

High Stability

The static sealing design prevents leaks by isolating the liquid from the motor, while epoxy encapsulation ensures 100% waterproof capability. Also features overload protection for safe operation.

Low Noise

With low rotor imbalance, these pumps operate quietly 5-10 dB(A) lower than comparable brushed DC pumps, while eliminating commutation vibrations for smoother operation.

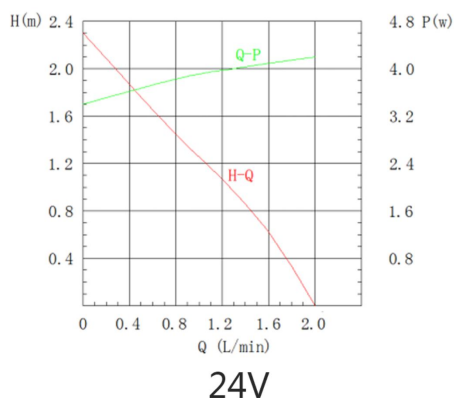
Wide Application

Micro brushless centrifugal water pumps are suitable for various occasions, including aquariums, medical equipment, humidifiers, etc., to meet the liquid transfer needs of different fields.

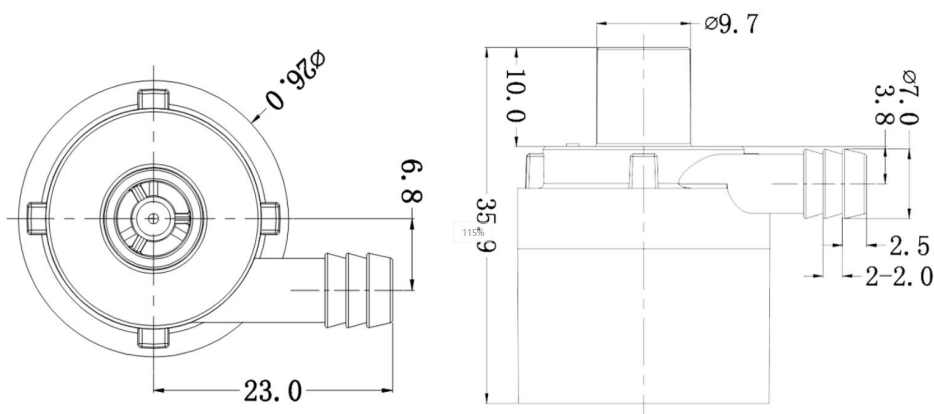
>> Technical Parameters

Model	Voltage	Amps	Max Flow Rate	Max Lift Head	Power	Work Voltage	Flow Range	Max Temperature
DTS2502-A	6V	0.15A	1.3LPM	1.0M	0.90W	3-24V DC	0.9-2.0LPM	70℃
DTS2502-B	12V	0.34A	2.0LPM	2.0M	3.80W			
DTS2502-C	18V	0.22A	2.0LPM	2.0M	3.96W			
DTS2502-D	24V	0.18A	2.0LPM	2.3M	4.32W			

>> Flow-lift Curve



>> Dimensions





GP DC Miniature Centrifugal Water Pump

Quality OEM Electric Centrifugal Water Pump DTS2502F (Food-Grade)

>> Product Outward



>> Specifications

Pump Type	Centrifugal Pump / DC brushless motor (20000 hours)
Speed Control	Voltage and PWM adjustable optional
Signal Feedback	Motor speed and RD status
IP Level	Epoxy potting, IP68 waterproof rating
Power Supply	Suitable for solar panel, batteries,adapter or other power module.
Medium	Water, coffee and other non-viscous liquid
Protection	Rotor lock protection/Reversepolarity protection (Can be customized as required)
Remark	Can't dry-running, not self-priming

>> Product Futures

Efficient Design

Micro brushless centrifugal pumps have a simple, lightweight structure that operates with high efficiency, providing continuous and stable flow and head for large volumes of low-viscosity liquids.

High Stability

The static sealing design prevents leaks by isolating the liquid from the motor, while epoxy encapsulation ensures 100% waterproof capability. Also features overload protection for safe operation.

Low Noise

With low rotor imbalance, these pumps operate quietly 5-10 dB(A) lower than comparable brushed DC pumps, while eliminating commutation vibrations for smoother operation.

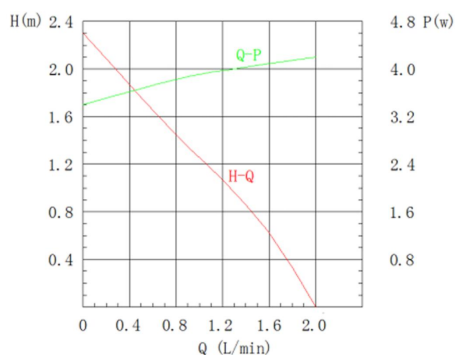
Wide Application

Micro brushless centrifugal water pumps are suitable for various occasions, including aquariums, medical equipment, humidifiers, etc., to meet the liquid transfer needs of different fields.

>> Technical Parameters

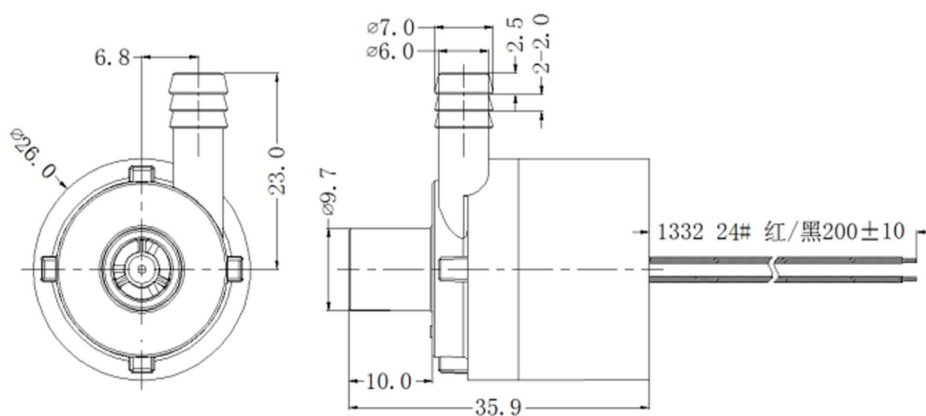
Model	Voltage	Amps	Max Flow Rate	Max Lift Head	Power	Work Voltage	Flow Range	Max Temperature
DTS2502F -A	6V	0.15A	1.3LPM	1.0M	0.90W	3-24V DC	0.9-2.0LPM	100℃
DTS2502F -B	12V	0.34A	2.0LPM	2.0M	3.80W			
DTS2502F -C	18V	0.22A	2.0LPM	2.0M	3.96W			
DTS2502F -D	24V	0.18A	2.0LPM	2.3M	4.32W			

>> Flow-lift Curve



24V

>> Dimensions





GP DC Miniature Centrifugal Water Pump

Quality OEM Electric Centrifugal Water Pump DTS2503

>> Product Outward



>> Specifications

Pump Type	Centrifugal Pump / DC brushless motor (20000 hours)
Speed Control	Voltage and PWM adjustable optional
Signal Feedback	Motor speed and RD status
IP Level	Epoxy potting, IP68 waterproof rating
Power Supply	Suitable for solar panel, batteries,adapter or other power module.
Medium	Water, coffee and other non-viscous liquid
Protection	Rotor lock protection/Reversepolarity protection (Can be customized as required)
Remark	Can't dry-running, not self-priming

>> Product Futures

Efficient Design

Micro brushless centrifugal pumps have a simple, lightweight structure that operates with high efficiency, providing continuous and stable flow and head for large volumes of low-viscosity liquids.

High Stability

The static sealing design prevents leaks by isolating the liquid from the motor, while epoxy encapsulation ensures 100% waterproof capability. Also features overload protection for safe operation.

Low Noise

With low rotor imbalance, these pumps operate quietly 5-10 dB(A) lower than comparable brushed DC pumps, while eliminating commutation vibrations for smoother operation.

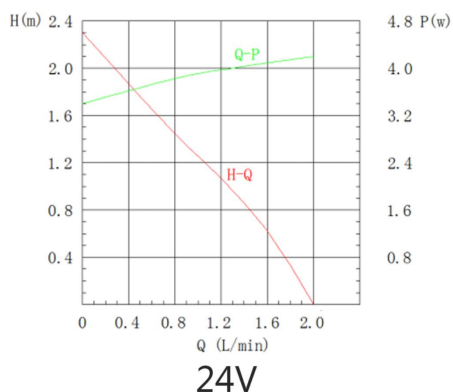
Wide Application

Micro brushless centrifugal water pumps are suitable for various occasions, including aquariums, medical equipment, humidifiers, etc., to meet the liquid transfer needs of different fields.

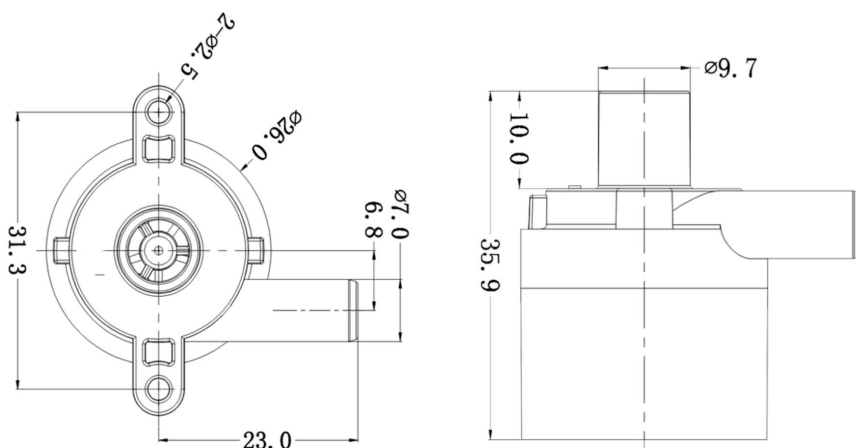
>> Technical Parameters

Model	Voltage	Amps	Max Flow Rate	Max Lift Head	Power	Work Voltage	Flow Range	Max Temperature
DTS2503-A	6V	0.15A	1.3LPM	1.0M	0.90W	3-24V DC	0.9-2.0LPM	70℃
DTS2503-B	12V	0.34A	2.0LPM	2.0M	3.80W			
DTS2503-C	18V	0.22A	2.0LPM	2.0M	3.96W			
DTS2503-D	24V	0.18A	2.0LPM	2.3M	4.32W			

>> Flow-lift Curve



>> Dimensions





GP DC Miniature Centrifugal Water Pump

Quality OEM Electric Centrifugal Water Pump DTS2503F (Food-Grade)

>> Product Outward



>> Specifications

Pump Type	Centrifugal Pump / DC brushless motor (20000 hours)
Speed Control	Voltage and PWM adjustable optional
Signal Feedback	Motor speed and RD status
IP Level	Epoxy potting, IP68 waterproof rating
Power Supply	Suitable for solar panel, batteries,adapter or other power module.
Medium	Water, coffee and other non-viscous liquid
Protection	Rotor lock protection/Reversepolarity protection (Can be customized as required)
Remark	Can't dry-running, not self-priming

>> Product Futures

Efficient Design

Micro brushless centrifugal pumps have a simple, lightweight structure that operates with high efficiency, providing continuous and stable flow and head for large volumes of low-viscosity liquids.

High Stability

The static sealing design prevents leaks by isolating the liquid from the motor, while epoxy encapsulation ensures 100% waterproof capability. Also features overload protection for safe operation.

Low Noise

With low rotor imbalance, these pumps operate quietly 5-10 dB(A) lower than comparable brushed DC pumps, while eliminating commutation vibrations for smoother operation.

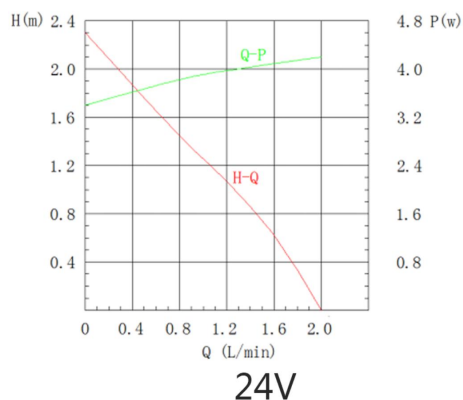
Wide Application

Micro brushless centrifugal water pumps are suitable for various occasions, including aquariums, medical equipment, humidifiers, etc., to meet the liquid transfer needs of different fields.

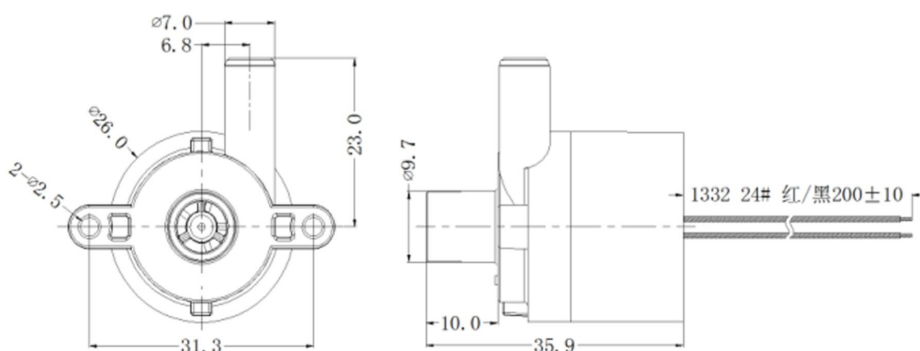
>> Technical Parameters

Model	Voltage	Amps	Max Flow Rate	Max Lift Head	Power	Work Voltage	Flow Range	Max Temperature
DTS2503F -A	6V	0.15A	1.3LPM	1.0M	0.90W	3-24V DC	0.9-2.0LPM	100℃
DTS2503F -B	12V	0.34A	2.0LPM	2.0M	3.80W			
DTS2503F -C	18V	0.22A	2.0LPM	2.0M	3.96W			
DTS2503F -D	24V	0.18A	2.0LPM	2.3M	4.32W			

>> Flow-lift Curve



>> Dimensions





GP DC Miniature Centrifugal Water Pump

Quality OEM Electric Centrifugal Water Pump DTS2504

>> Product Outward



>> Specifications

Pump Type	Centrifugal Pump / DC brushless motor (20000 hours)
Speed Control	Voltage and PWM adjustable optional
Signal Feedback	Motor speed and RD status
IP Level	Epoxy potting, IP68 waterproof rating
Power Supply	Suitable for solar panel, batteries,adapter or other power module.
Medium	Water, coffee and other non-viscous liquid
Protection	Rotor lock protection/Reversepolarity protection (Can be customized as required)
Remark	Can't dry-running, not self-priming

>> Product Futures

Efficient Design

Micro brushless centrifugal pumps have a simple, lightweight structure that operates with high efficiency, providing continuous and stable flow and head for large volumes of low-viscosity liquids.

High Stability

The static sealing design prevents leaks by isolating the liquid from the motor, while epoxy encapsulation ensures 100% waterproof capability. Also features overload protection for safe operation.

Low Noise

With low rotor imbalance, these pumps operate quietly 5-10 dB(A) lower than comparable brushed DC pumps, while eliminating commutation vibrations for smoother operation.

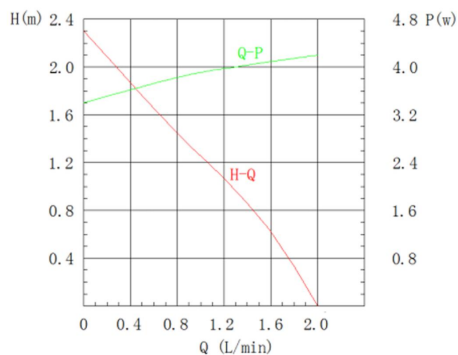
Wide Application

Micro brushless centrifugal water pumps are suitable for various occasions, including aquariums, medical equipment, humidifiers, etc., to meet the liquid transfer needs of different fields.

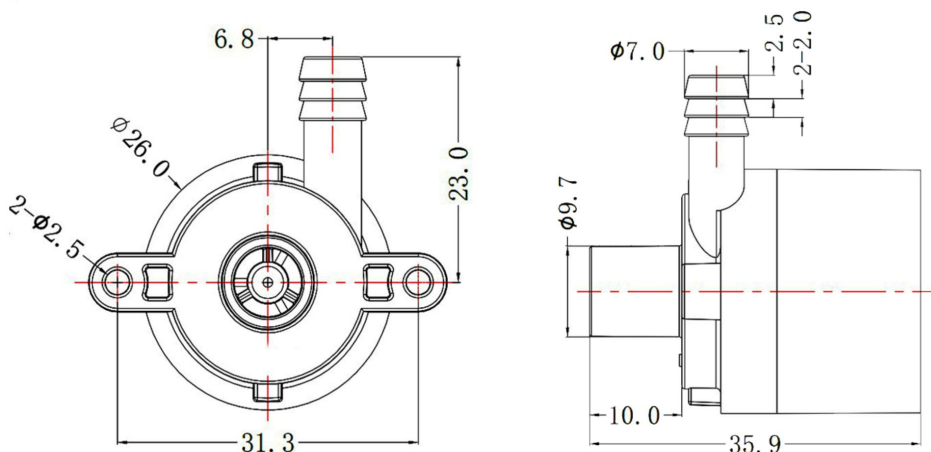
>> Technical Parameters

Model	Voltage	Amps	Max Flow Rate	Max Lift Head	Power	Work Voltage	Flow Range	Max Temperature
DTS2504-A	6V	0.15A	1.3LPM	1M	0.9W	3-24V DC	0.9-2.0LPM	70℃
DTS2504-B	12V	0.34A	2LPM	2M	3.8W			
DTS2504-C	18V	0.22A	2LPM	2M	3.96W			
DTS2504-D	24V	0.18A	2LPM	2.3M	4.32W			

>> Flow-lift Curve



>> Dimensions





GP DC Miniature Centrifugal Water Pump

Quality OEM Electric Centrifugal Water Pump DTS2504F (Food-Grade)

>> Product Outward



>> Specifications

Pump Type	Centrifugal Pump / DC brushless motor (20000 hours)
Speed Control	Voltage and PWM adjustable optional
Signal Feedback	Motor speed and RD status
IP Level	Epoxy potting, IP68 waterproof rating
Power Supply	Suitable for solar panel, batteries,adapter or other power module.
Medium	Water, coffee and other non-viscous liquid
Protection	Rotor lock protection/Reversepolarity protection (Can be customized as required)
Remark	Can't dry-running, not self-priming

>> Product Futures

Efficient Design

Micro brushless centrifugal pumps have a simple, lightweight structure that operates with high efficiency, providing continuous and stable flow and head for large volumes of low-viscosity liquids.

High Stability

The static sealing design prevents leaks by isolating the liquid from the motor, while epoxy encapsulation ensures 100% waterproof capability. Also features overload protection for safe operation.

Low Noise

With low rotor imbalance, these pumps operate quietly 5-10 dB(A) lower than comparable brushed DC pumps, while eliminating commutation vibrations for smoother operation.

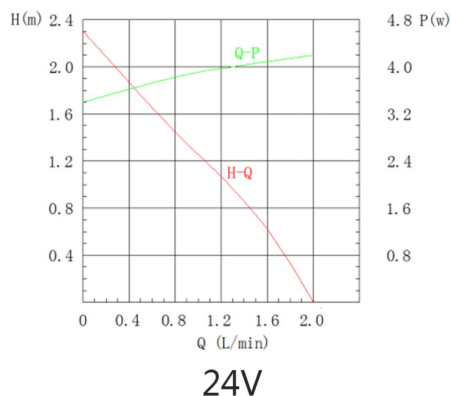
Wide Application

Micro brushless centrifugal water pumps are suitable for various occasions, including aquariums, medical equipment, humidifiers, etc., to meet the liquid transfer needs of different fields.

>> Technical Parameters

Model	Voltage	Amps	Max Flow Rate	Max Lift Head	Power	Work Voltage	Flow Range	Max Temperature
DTS2504F -A	6V	0.15A	1.3LPM	1M	0.9W	3-24V DC	0.9-2.0LPM	100℃
DTS2504F -B	12V	0.34A	2LPM	2M	3.8W			
DTS2504F -C	18V	0.22A	2LPM	2M	3.96W			
DTS2504F -D	24V	0.18A	2LPM	2.3M	4.32W			

>> Flow-lift Curve



>> Dimensions

