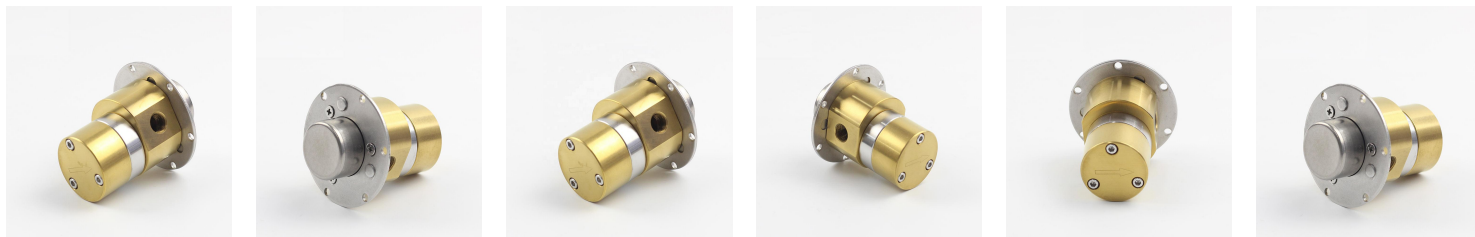




# GP DC Magnetic Drive Gear Pump

## Anti-friction Magnetic Drive Gear Pump Head MG200Y Series

### >> Product Description



MG200 (YY / YT) Magnetic drive gear pump is a new gear pump, YT Series gears and super-hard ceramic material made of Alloy, Stainless Steel hardening treatment with high-quality manufactured housing composed of a gear pump. YY series of high quality Stainless Steel made of hardened gears, shafts and housing the gear pump in a hard particle slurry liquid (such as the use of pigment ink, a liquid containing titanium dioxide), and it works fine. using magnetic coupling drive structural design to solve the gear shaft end leakage problems. it is called non-disclosure of the gear pump is mainly used in the field of traditional Chinese medicine machines, packaging machines, inkjet printing machines, analytical instruments and other trace delivery.

### >> Product Futures

Pump Type	DC Magnetic Drive Gear Pump
Medium	Suitable particle diameter of $\leq 20$ microns solution containing the liquid. Suitable for transporting particles containing pigment ink and paint.
Temperature	The transmission medium temperature: $-30^{\circ}\text{C} \sim 100^{\circ}\text{C}$ (except frozen). Ambient temperature: $-30 \sim 50^{\circ}\text{C}$ .
Environment	High pressure (20bar) used in a closed system under vacuum ( $-0.8\text{bar}$ ).
Materials	The inner rotor gear pump for NdFeB magnets PPS plastic coated, static sealing material is PTFE; rotor cover material Stainless Steel 316.

### >> Technical Parameters

Model	Displacement	Max Pressure	System Pressure	Speed Range	Medium Viscosity	Gear Height	Shell Material	Gear Material
MG204YT	0.27 ml/rev	5 bar	$-0.8 \sim 20$ bar	500~2500 rpm	300~1500 cps	4 mm	Stainless Steel 316 Hardened	Hard Alloy
MG209YT	0.55 ml/rev					9 mm		
MG213YT	0.75 ml/rev					13 mm		
MG204YY	0.27 ml/rev				300~2500 cps	4 mm		SS316 Hardened
MG209YY	0.55 ml/rev					9 mm		
MG213YY	0.75 ml/rev					13 mm		

### >> Outline Dimension

